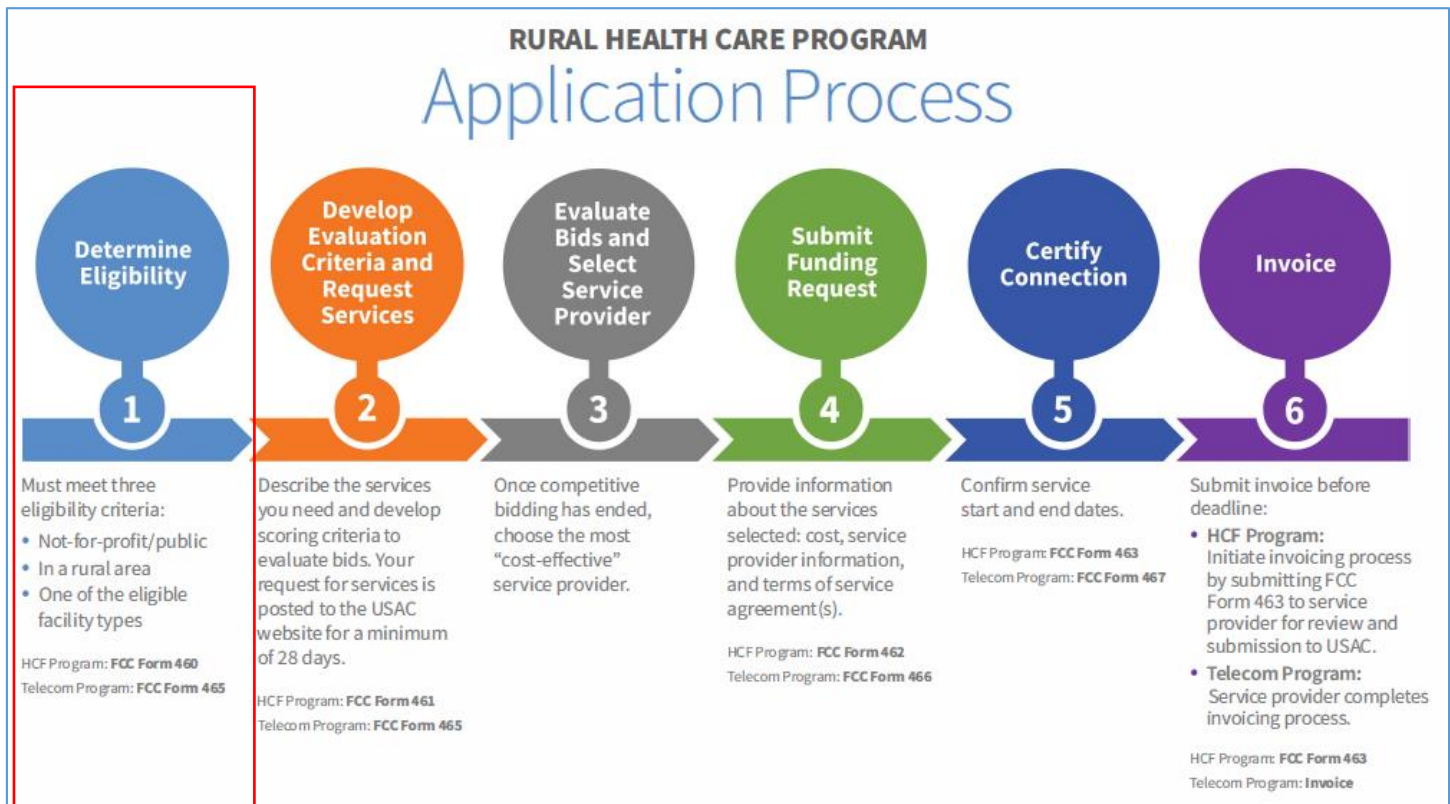


Rural Health Care Program

Eligibility



Determining Eligibility

Three criteria to determine eligibility

1. Status—Your site must be
 - Not for Profit
 - Public
2. Health Care Provider (HCP) Type : [HCF Program](#) and [Telecom Program](#)
3. Rural Location
 - Telecom Program: HCP applicants must be located in an FCC-approved rural location to be considered rural.
 - HCF Program: Individual HCP applicants must be located in an FCC-approved rural location to be considered rural. Non-rural HCP applicants may apply as part of a majority-rural consortium.
 - Use the [rural look-up tool](#) on the USAC website.

Each HCP site or location is considered an individual HCP for purposes of calculating support under the RHC Program. Each site must thus demonstrate that *by itself* it is an eligible entity.

Eligibility Forms

- FCC Form 460 – HCF Program
- FCC Form 465 – Telecom Program

Continued on next page...

Information Collected on the Eligibility Forms

- Site information
- Contact information
- Eligibility information
- Certifications and signatures
- Services requested (Telecom Program only)

Note: the FCC Form 465 must be completed in a single session. You are unable to save a draft form and return to complete at a later time.

My Portal Access

- New applicants will not have access to [My Portal](#) (our online application management system) until your first form is approved.
- Go to the My Portal homepage and select “New Applicant” at the bottom to begin your form.

Tips for Consortia

- To apply as a consortium, an FCC Form 460 will need to be submitted for the consortium itself.
- Each participating HCP will also complete an FCC Form 460.
- The consortium will receive its own unique HCP number, separate from the individual sites participating in the consortium.

Account Holders

- USAC recommends having more than one account holder for your HCP(s).
- You can add secondary account holders when filing your FCC Form 460 or 465.
- In the HCF Program, the Primary Account Holder (PAH) can assign secondary and tertiary account holders in the “Account Holders” tab in My Portal.
- **Note:** tertiary account holders will need to provide an up to date [Third Party Authorization \(TPA\)](#) to be able to submit forms on behalf of an HCP.
- In the Telecom Program, the PAH can add or remove account holders in the “My Account Settings” of My Portal.

Resources

- [Subscribe](#) to the RHC Program Monthly Newsletter
- [Eligibility Learning Modules](#)
- [Rurality Tier Search Tool](#)
- RHC Program [Rural Lookup Tool](#)
- [HCF Program Account Holder Guide](#)
- [Telecom Program Account Holder Guide](#)

