

Eligible Services

2020 Applicant and Service Provider Training
November 6, 2020



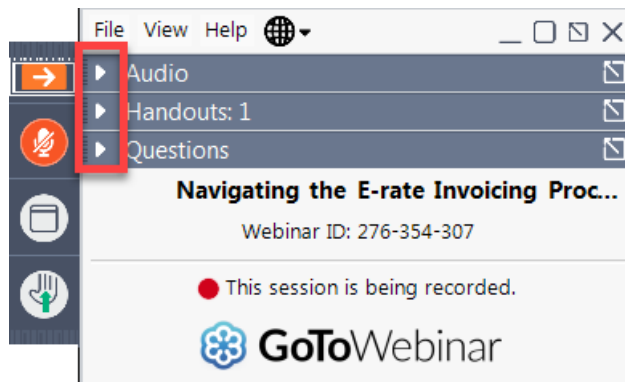
Universal Service
Administrative Co.

HOUSEKEEPING – WEBINAR PANEL

- The webinar panel is located on the right-hand side of the screen.
- Open the panel by clicking the orange arrow.

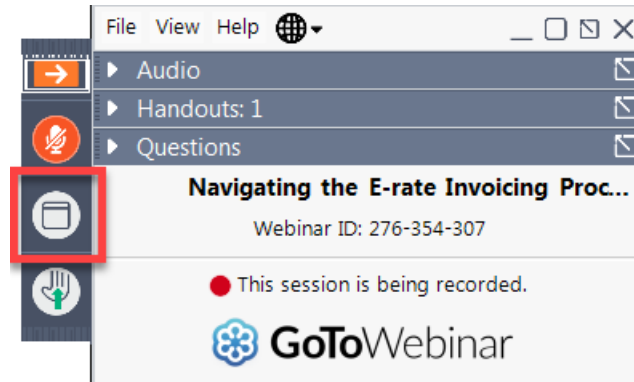


- Use the white arrows to open the sections in the panel.

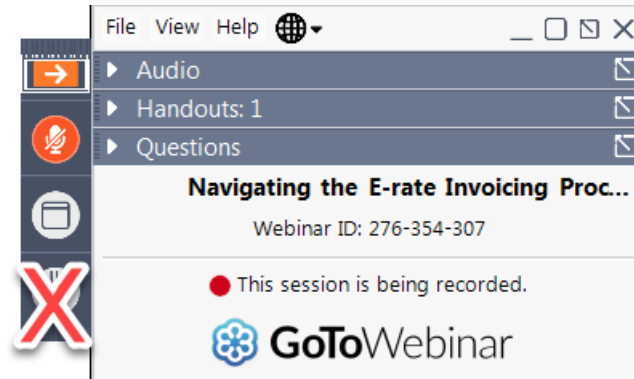


HOUSEKEEPING – WEBINAR PANEL

- You can use the panel to view the presentation in full screen or window mode.

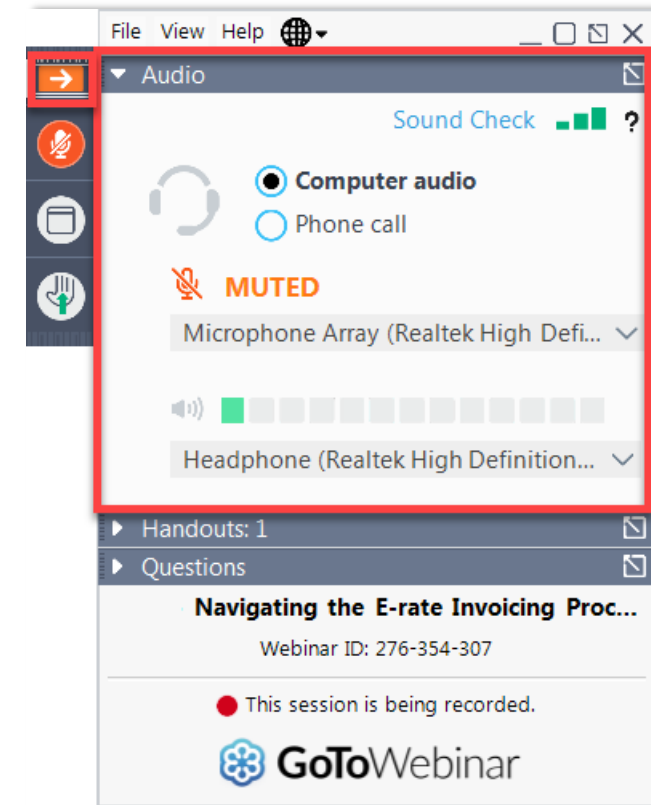


- We are not using the hand raise function.



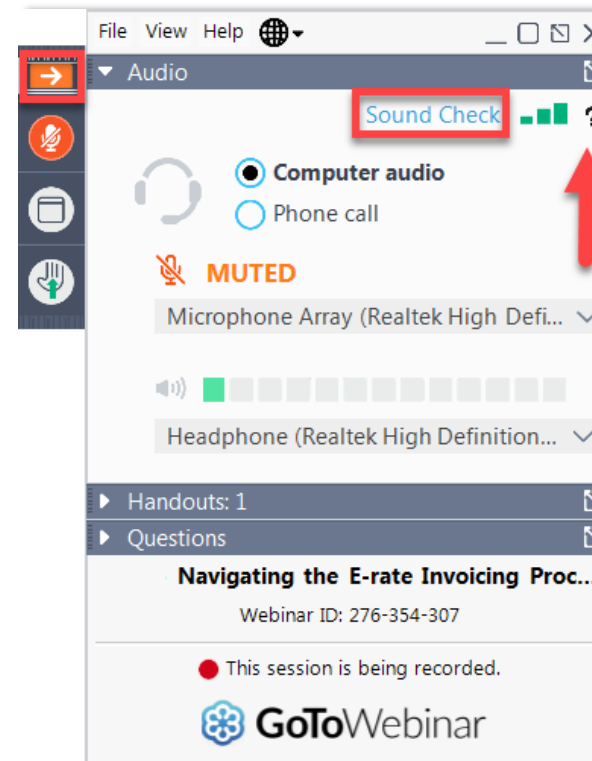
HOUSEKEEPING – AUDIO

- Use the “Audio” section of your control panel to select an audio source.
- Choose one of the audio options:
 - Your computer's audio
 - Call in using an access code and audio PIN.
- The audience will remain on mute.

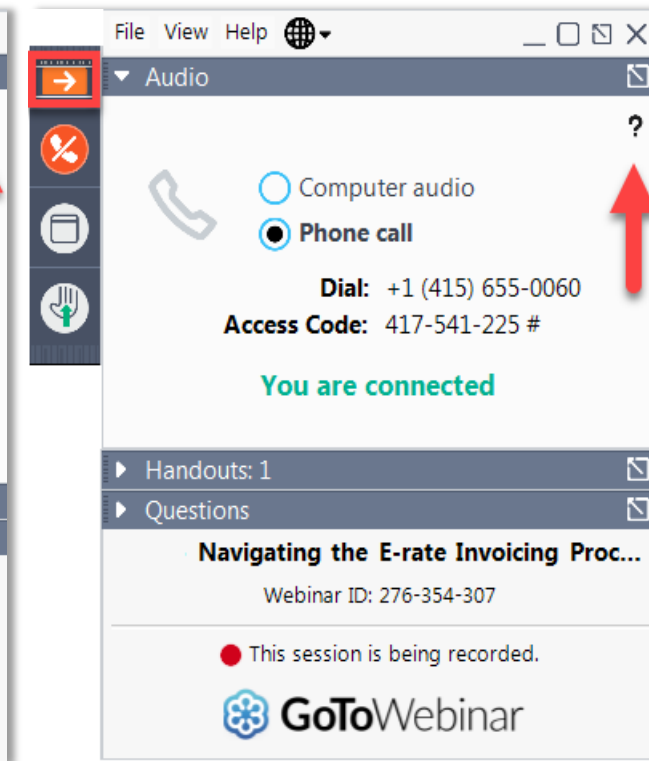


HOUSEKEEPING – TECHNICAL ISSUES

- Use the “Sound Check” link and click question mark icon for audio help.
- Exit webinar and click the [check system requirements](#) link in the event confirmation email to determine whether your computer meets the requirements to see and hear the webinar.
- If issues persist, call 833-851-8340 to [troubleshoot with GoToWebinar](#).



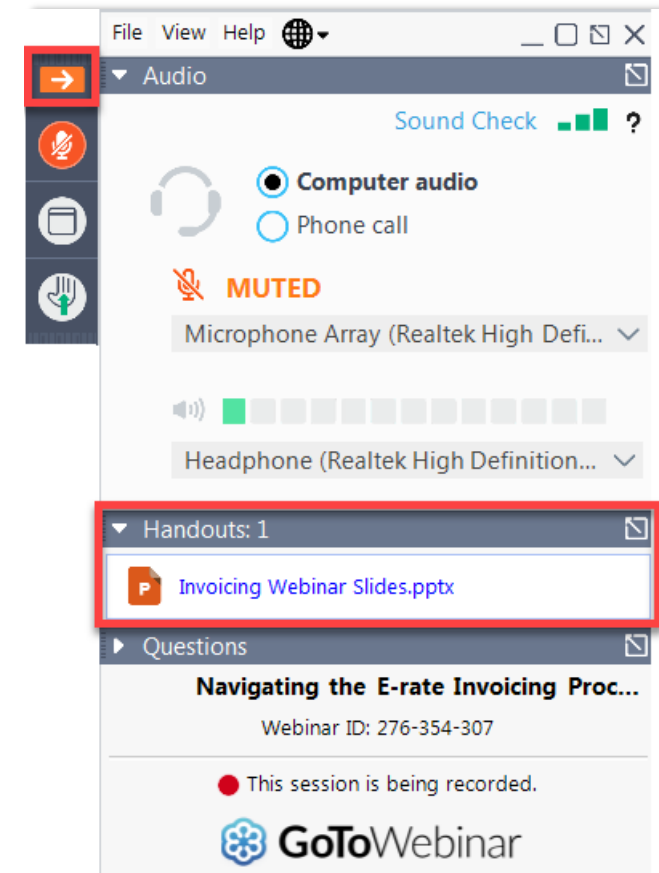
Computer Audio



Phone Call

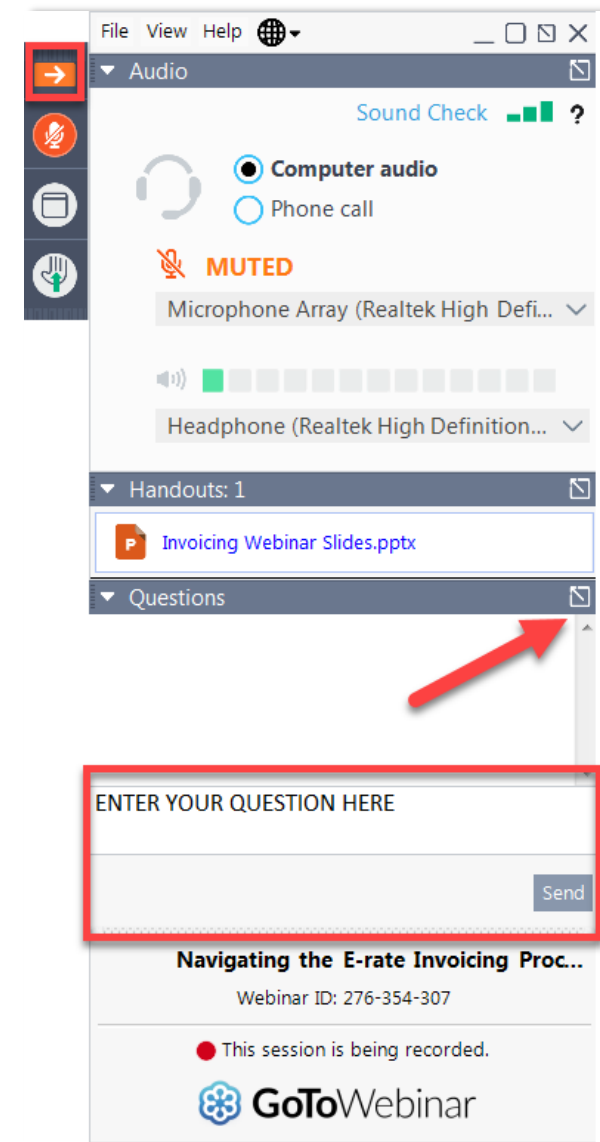
HOUSEKEEPING – RESOURCES

- The **slide deck** is available when you click the arrow to expand the “**Handouts**” tab.
- A recording of this webinar will be available after the event via the registration link.



HOUSEKEEPING – Q&A

- **There will be a live Q&A session focused on today's topics.**
- Tips for submitting questions:
 - Use the “Questions” box in your webinar control panel anytime during the presentation.
 - Click the box with the arrow above the questions box to expand it and see all written answers.
 - Write in full sentences.
 - Ask one question at a time.
 - Ask questions related to webinar content.



CLIENT SERVICE BUREAU (CSB)



Call us at (888) 203-8100

Monday – Friday 8:00 a.m. to 8:00 p.m. ET



Create a customer service case in the E-rate Productivity Center (EPC):

1. Log in to EPC.
2. Select the **Contact Us** link from the upper right menu on your landing page.



MEET OUR TEAM



Bernie Manns
Director

E-rate Program



Nkeshi Free
Communications Specialist

E-rate Program

AGENDA

1. Eligible Services
2. Early Installation
3. Basic Fiber Concepts

Eligible Services



Eligible Services

Category One (C1)

Data Transmission and/or Internet Access

-
- No budget (limit) on funding request

Category Two (C2)

Internal Connections, Managed Internal Broadband Services, and Basic Maintenance of Internal Connections

-
- Budget (limit) on funding request
 - Budget covers a five-year period

Eligible Services

Category One includes services needed to support broadband connectivity to eligible schools and/or libraries.

Eligible services include:

- Data Transmission and/or
- Internet Access services

Eligible Services

Examples of **Category One (C1)** services include:

- Leased lit fiber or leased dark fiber
- Internet access
- Satellite service
- DS-1 (T-1), DS-3 (T-3), etc.
- DSL
- Broadband over power lines

Eligible Services

Category Two includes services needed for broadband connectivity within schools and/or libraries, and services needed to bring broadband into and provide it throughout schools and libraries.

There are three service types:

- Internal Connections
- Basic Maintenance of Internal Connections
- Managed Internal Broadband Services

Eligible Services

Examples of **Category Two (C2)** services include:

- Routers, switches, and modems
- Cabling
- Access points for a local area network or wireless local area network
- Basic maintenance of eligible equipment
- Managed internal broadband services (e.g., managed Wi-Fi)

Eligible Services

Category One (C1) services are not limited in cost as long as they are cost-effective.

Category Two (C2) services are limited by a pre-discount cost ceiling (“Category Two budget”)

- Budget period is five years.
- Budget is calculated based on:
 - Schools: number of full-time and part-time students in the school
 - Libraries: square footage of the library branch

Eligible Services List (ESL)

- Each year, the FCC releases a list of services that are eligible for the upcoming funding year at least 60 days before the opening of the application filing window.
- The ESL for each funding year provides general guidance on what products and services are eligible under the E-rate program for the upcoming funding year.



Eligible Services List (ESL)

- The ESL also provides helpful information such as eligibility conditions for each category of service for each specified funding year.
- Applicants can only receive funding for eligible products or services that are being used for educational purposes.



Eligible Services List (ESL)

- The Eligible Services List for FY2021 will be posted on the USAC website on the [Eligible Services List web page](#) when it becomes available.
- (This will occur at least 60 days prior to the opening of the FY2021 application filing window.)
- This page also contains Eligible Services Lists for previous funding years.



Eligible Services – Recurring Services

- **Recurring services** are services that are billed on a monthly basis – (e.g., broadband internet access service.)
- Recurring services must be received during the funding year to be eligible for E-rate funding.
- For FY2020, this means that recurring services must be received between July 1, 2020 through June 30, 2021.

Eligible Services – Non-Recurring Services

- **Non-recurring services** are one-time charges for services and/or equipment that are delivered and installed at eligible locations (e.g., wiring, other cabling or wireless installations and equipment).
- Applicants and service providers have until September 30 of the relevant funding year to deliver and install non-recurring C2 services.
- For FY2020, this means non-recurring C2 services can be delivered from July 1, 2020 through September 30, 2021.
- This service delivery deadline can be extended under certain circumstances.

Early Installation



Early Installation

What is early installation?

- Some **Category One** non-recurring components can be installed as early as January 1, prior to the July 1 start of the funding year, if certain conditions are met.
- **Category Two** non-recurring services can be installed beginning the April 1 before the funding year.



Early Installation

What is early installation?

Early installation for non-recurring **Category One** services can occur provided the following conditions are met:

- Construction begins after selection of the service provider;
- The service provider must be selected pursuant to an FCC Form 470 posting;
- A Category One recurring service must depend on the installation of the infrastructure; and
- The Category One recurring service's actual start date is on or after July 1 of the funding year.

Early Installation

What is early installation?

NOTE: The invoices (BEAR or SPI) cannot be dated before July 1 of the funding year.

Additional Reminder: Funding is **not** guaranteed until USAC makes a commitment.

Early Installation

What is early installation?

- Early installation of non-recurring **Category Two** services:
 - Services cannot start until **after the 28-day competitive bidding** process is completed and the service provider is selected.
 - Funding is not guaranteed until USAC makes a commitment.

Basic Fiber Concepts



Introduction to Fiber

Types of eligible fiber

1. Leased lit fiber

The applicant pays a monthly fee to the service provider who provides the fiber, the connections, the network equipment, and the data transport and/or internet access service. The service provider also manages and maintains the network.

2. Leased dark fiber

The applicant leases a portion of a fiber network owned by a service provider and pays separately for the network equipment, maintenance and operations, and data transport and/or internet access service over that fiber.

3. Self-provisioned network

(next slide)

Introduction to Fiber

Types of eligible fiber (continued)

3. Self-provisioned network

Applicant ownership of a high-speed broadband network. The applicant hires a vendor to construct the network or a portion of the network, and thereafter completely or partially owns and maintains that network or portion. An E-rate eligible entity may share the services and equipment used to construct and/or operate a self-provisioned network supported by E-rate funding with an ineligible third-party entity so long as the ineligible third-party entity pays its fair share of the costs, i.e., its pro-rata portion of the undiscounted costs of the network.

Note: Although included as a fiber option, a self-provisioned network may utilize technologies other than fiber. The applicant owns the network that it hires a service provider to construct. The applicant must pay for the network equipment, pay to maintain the network, and pay for any data transport and/or internet access services separately.

Fiber – Network Equipment

What is Network Equipment?

Network Equipment includes the electronics and equipment **necessary** to make a Category One fiber service functional.



Fiber – Network Equipment

What is Network Equipment?

A single piece of Network Equipment (also called basic terminating equipment) is eligible under Category One.

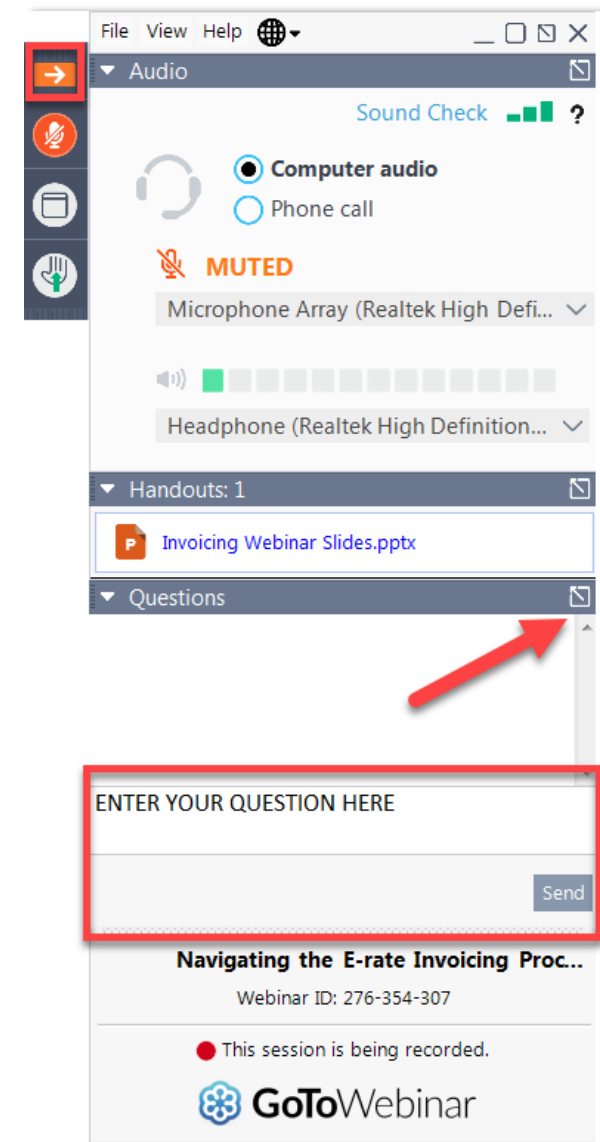
- The single piece must be located at the demarcation – the point at which the service provider would start to check if service were interrupted.

Other pieces of Network Equipment can be eligible as Category Two Internal Connections.



HOUSEKEEPING – Q&A

- **Review for the Q&A session**
- Tips for submitting questions:
 - Use the “Questions” box in your webinar control panel anytime during the presentation.
 - Click the box with the arrow above the questions box to expand it and see all written answers.
 - Write in full sentences.
 - Ask one question at a time.
 - Ask questions related to webinar content.



Q&A SESSION

SUBMIT YOUR QUESTIONS DURING THE LIVE WEBINAR

CLIENT SERVICE BUREAU (CSB)



Call us at (888) 203-8100

Monday – Friday 8:00 a.m. to 8:00 p.m. ET



Create a customer service case in EPC:

1. Log in to EPC.
2. Select the **Contact Us** link from the upper right menu on your landing page.



WEBINAR SURVEY

We would like your feedback on today's webinar.

Please fill out the pop-up survey after the webinar ends or use the link emailed to you after the event.

Webinar Survey

1. Are you an applicant, a service provider, or a consultant?
 - ☐ Applicant
 - ☐ Service provider
 - ☐ Consultant
 - ☐ Other
2. Please rate your overall webinar experience.
 - ☐ Excellent
 - ☐ Good
 - ☐ Fair
 - ☐ Poor
3. The content of the webinar was (select all that apply):
 - ☐ What I expected when I signed up
 - ☐ Relevant and useful to my work
 - ☐ New information for me
 - ☐ Easy to understand
 - ☐ Other

Thank You!



Universal Service
Administrative Co.