

Example for On-premise Priority 1 Services:

Item 21 Attachment				
Applicant: Little Orange School District		Attachment: T1-2		
BEN: 3456789		Application: 876543		
Narrative description: Monthly T-1 service from district office to high school, and district office to middle school, including on-premise equipment.				
Quantity	Product or Service Description	Unit Cost	Extended Pre-discount Cost	
			Recurring	Non-Recurring
Non-recurring Costs				
3	Brand X Model 123 network router	\$1,920.00		\$5,760.00
1	Installation at three sites	\$1,060.00		\$1,060.00
Monthly Recurring Costs				
12	T-1 from district office to high school	\$340.00	\$4,080.00	
12	T-1 from district office to middle school	\$320.00	\$3,840.00	
		Subtotal:	\$7,920.00	\$6,820.00
Total Pre-discount Cost:			\$14,740.00	

Additional Information:

Little Orange School District certifies that the following statements are true and accurate:

1. The leased on-premise equipment is an integral component of the telecommunications or Internet access service.
2. The leased on-premise equipment will be provided by the same service provider that provides the associated telecommunications or Internet access service.
3. Responsibility for maintaining the equipment rests with the service provider, not the school or library.
4. Ownership of the equipment will not transfer to the school or library in the future, and the relevant contract or lease does not include an option to purchase the equipment by the school or library.
5. Upfront, capital charges of the on-premise equipment are less than 67% of total charges in the funding year. See below for this calculation.
6. The equipment will not be used by the school or library for any purpose other than receipt of the eligible telecommunications or Internet access service of which it is a part.
7. The applicant's internal communications network is functional without dependence on the equipment.
8. There are no contractual, technical, or other limitations that would prevent the service provider from using equipment that would normally be shared in other similar arrangements with other customers.

67% calculation: The calculation of upfront, capital charges of the on-premise equipment in comparison to total charges (recurring plus non-recurring) in the funding year is as follows:

A. Upfront capital charges (includes initial recovery of components and installation, but does not include reasonable costs for maintenance)	\$6,820.00
B. Total charges (recurring plus non-recurring)	\$14,740.00
C. Percentage attributable to upfront capital charges (item A divided by item B)	46%

SLD NOTES: See page 2 of this file for an example configuration diagram.

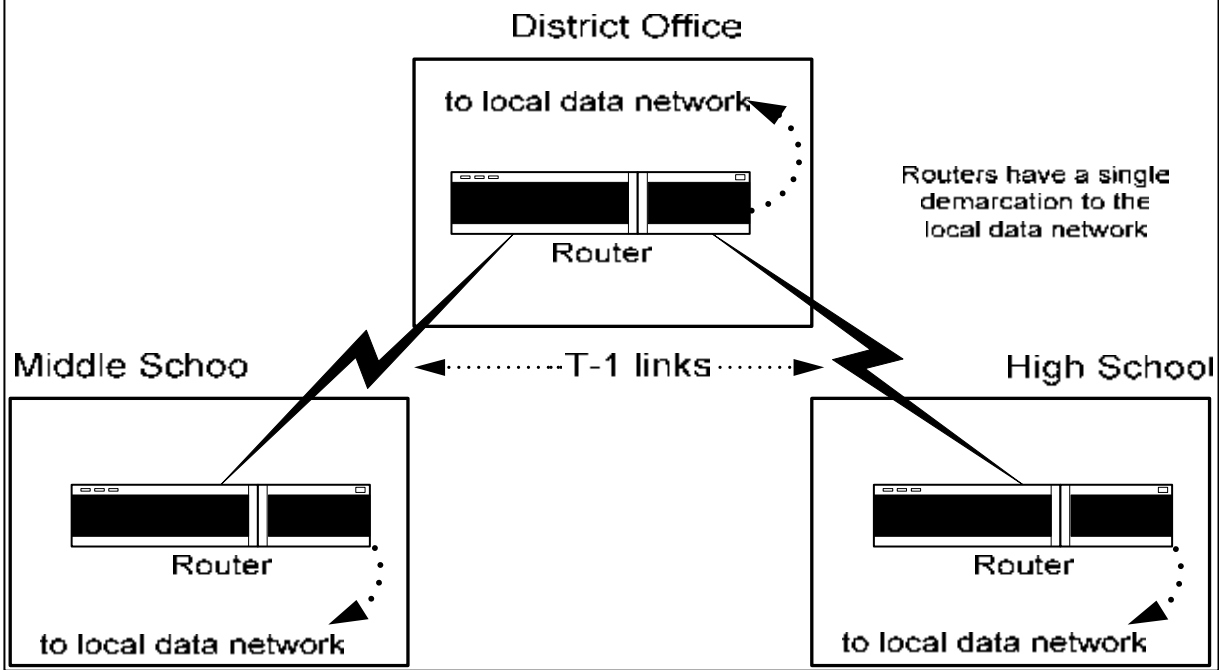
A diagram that shows how the components are interconnected with an applicant's internal connection may be required to confirm that the proposed configuration is acceptable.*

Item 21 Attachment-- Diagram

Applicant: Little Orange School District
BEN: 3456789

Attachment: T1-2
Application: 876543

Wide Area Network Configuration Diagram



* Note that if routers are capable of remote dial-in access, an additional certification is required. See the example for Remote Access equipment for further details.